

MKLP1 (YD16580) Rabbit mAb

货号: **AYD11886**

产品信息

反应	Human,Mouse,Rat
宿主	Rabbit
克隆性	Monoclonal
预测反应	
应用	WB ICC/IF
推荐浓度	
理论分子量	110kDa
实测分子量	
形式	Liquid
保存条件	Store at -20°C. Avoid freeze / thaw cycles. Buffer: PBS with 0.75% BSA,50% glycerol,pH7.3.
偶联物	Unconjugated
阳性对照	HeLa,Rat testis
细胞定位	Nucleus, Cytoplasm, cytoskeleton, spindle, Midbody, Midbody ring
纯化	

抗原信息

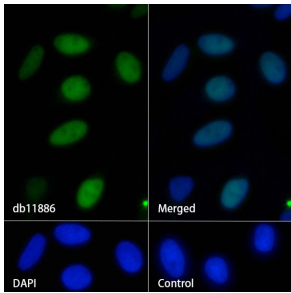
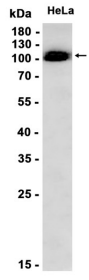
抗原信息	
------	--

靶点信息

研究背景	The protein encoded by this gene is a member of kinesin-like protein family. This family includes microtubule-dependent molecular motors that transport organelles within cells and move chromosomes during cell division. This protein has been shown to cross-bridge antiparallel microtubules and drive microtubule movement in vitro. Alternate splicing of this gene results in multiple transcript variants. [provided by RefSeq, Jul 2013]
基因ID	9493
基因名	KIF23
Swiss	Q02241

别名	MKLP1 (YD16580)
----	-----------------

产品验证



实验步骤

访问官网浏览详情: www.ablybio.cn