

— ABLYBIO, Help Your Research



# Phospho-Glutamate Receptor 1 (AMPA Subtype) (Ser845) (YD16107) Rabbit mAb

货号: AYD11874

## 产品信息

反应	Human,Mouse,Rat
宿主	Rabbit
克隆性	Monoclonal
预测反应	
应用	WB
推荐浓度	
理论分子量	102kDa
实测分子量	
形式	Liquid
保存条件	Store at -20°C. Avoid freeze / thaw cycles. Buffer: PBS with 0.75% BSA,50% glycerol,pH7.3.
偶联物	Unconjugated
阳性对照	Mouse brain,Rat brain
细胞定位	Cell membrane, Endoplasmic reticulum membrane, Postsynaptic cell membrane, Postsynaptic density membrane, Cell projection, dendrite, dendritic spine, Early endosome membrane, Recycling endosome membrane, Presynapse, Synapse
纯化	亲和纯化

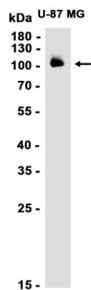
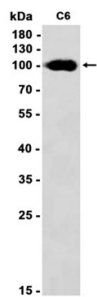
## 抗原信息

抗原信息	
------	--

## 靶点信息

研究背景	Glutamate receptors are the predominant excitatory neurotransmitter receptors in the mammalian brain and are activated in a variety of normal neurophysiologic processes. These receptors are heteromeric protein complexes with multiple subunits, each possessing transmembrane regions, and all arranged to form a ligand-gated ion channel. The classification of glutamate receptors is based on their activation by different pharmacologic agonists. This gene belongs to a family of alpha-amino-3-hydroxy-5-methyl-4-isoxazole propionate (AMPA) receptors. Alternatively spliced transcript variants encoding different isoforms have been found for this gene.
基因ID	2890
基因名	GRIA1
Swiss	P42261 ( <a href="https://www.uniprot.org/uniprotkb/P42261/entry">https://www.uniprot.org/uniprotkb/P42261/entry</a> )
别名	Phospho-Glutamate Receptor 1 (AMPA Subtype) (Ser845) (YD16107), Phospho-Glutamate Receptor 1 (AMPA Subtype) (Ser845) (YD16107) Rabbit mAb, GRIA1, AMPA-selective glutamate receptor 1, GluR-A, GluR-K1, Glutamate receptor ionotropic, AMPA 1, GLUA1, GLUH1, GLUR1

## 产品验证



## 实验步骤

访问官网浏览详情: [www.ablybio.cn](http://www.ablybio.cn) (<https://www.ablybio.cn/www.ablybio.cn>)