

Fibulin 1 (YD19814) Rabbit mAb

货号: **AYD11857**

产品信息

反应	Human,Mouse,Rat
宿主	Rabbit
克隆性	Monoclonal
预测反应	
应用	WB
推荐浓度	
理论分子量	77kDa
实测分子量	
形式	Liquid
保存条件	Store at -20°C. Avoid freeze / thaw cycles. Buffer: PBS with 0.75% BSA,50% glycerol,pH7.3.
偶联物	Unconjugated
阳性对照	HeLa,A-549,U-87MG,Mouse brain,Rat brain,Rat heart
细胞定位	Secreted, extracellular space, extracellular matrix
纯化	

抗原信息

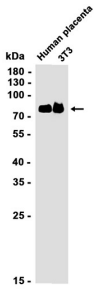
抗原信息	
------	--

靶点信息

研究背景	Fibulin 1 is a secreted glycoprotein that becomes incorporated into a fibrillar extracellular matrix. Calcium-binding is apparently required to mediate its binding to laminin and nidogen. It mediates platelet adhesion via binding fibrinogen. Four splice variants which differ in the 3' end have been identified. Each variant encodes a different isoform, but no functional distinctions have been identified among the four variants.
基因ID	2192
基因名	FBLN1
Swiss	P23142

别名	Fibulin 1 (YD19814)
----	---------------------

产品验证



实验步骤

访问官网浏览详情: www.ablybio.cn