

# KIFC1 (YD15595) Rabbit mAb

货号: **AYD11824**

## 产品信息

反应	Human
宿主	Rabbit
克隆性	Monoclonal
预测反应	
应用	WB IHC-P ICC/IF FC IP
推荐浓度	
理论分子量	74kDa
实测分子量	
形式	Liquid
保存条件	Store at -20°C. Avoid freeze / thaw cycles. Buffer: PBS with 0.75% BSA,50% glycerol,pH7.3.
偶联物	Unconjugated
阳性对照	Jurkat,HT-29,HeLa,A-549
细胞定位	Nucleus, Cytoplasm, cytoskeleton, microtubule organizing center, centrosome, spindle, Early endosome
纯化	

## 抗原信息

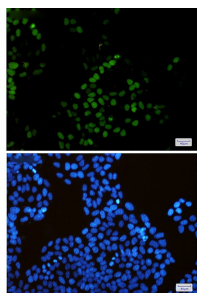
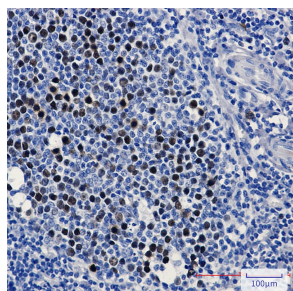
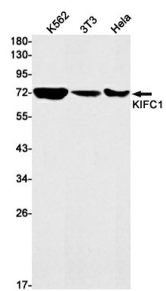
抗原信息	
------	--

## 靶点信息

研究背景	Minus end-directed microtubule-dependent motor required for bipolar spindle formation. May contribute to movement of early endocytic vesicles (By similarity). Regulates cilium formation and structure (By similarity).
基因ID	3833
基因名	KIFC1
Swiss	Q9BW19
别名	KIFC1 (YD15595)

## 产品验证

---



## 实验步骤

访问官网浏览详情: [www.ablybio.cn](http://www.ablybio.cn)