

Integrin beta 1 (YD15348) Rabbit mAb

货号: **AYD11811**

产品信息

反应	Human,Mouse,Rat
宿主	Rabbit
克隆性	Monoclonal
预测反应	
应用	WB IHC-P
推荐浓度	
理论分子量	88kDa
实测分子量	
形式	Liquid
保存条件	Store at -20°C. Avoid freeze / thaw cycles. Buffer: PBS with 0.75% BSA,50% glycerol,pH7.3.
偶联物	Unconjugated
阳性对照	A-431,U-87MG
细胞定位	Cell membrane, Cell projection, invadopodium membrane, ruffle membrane, Recycling endosome, Melanosome, Cleavage furrow, lamellipodium, Cell junction, focal adhesion, sarcolemma
纯化	

抗原信息

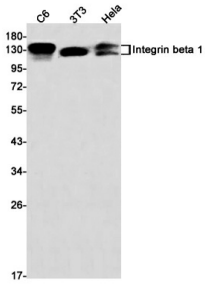
抗原信息	
------	--

靶点信息

研究背景	Integrins are heterodimeric proteins made up of alpha and beta subunits. At least 18 alpha and 8 beta subunits have been described in mammals. Integrin family members are membrane receptors involved in cell adhesion and recognition in a variety of processes including embryogenesis, hemostasis, tissue repair, immune response and metastatic diffusion of tumor cells. This gene encodes a beta subunit. Multiple alternatively spliced transcript variants which encode different protein isoforms have been found for this gene.
基因ID	3688
基因名	ITGB1

Swiss	P05556
别名	Integrin beta 1 (YD15348)

产品验证



实验步骤

访问官网浏览详情: www.ablybio.cn