

# SCF (YD31492) Rabbit mAb

货号: **AYD11779**

## 产品信息

反应	Human
宿主	Rabbit
克隆性	Monoclonal
预测反应	
应用	WB IHC-P ICC/IF FC
推荐浓度	
理论分子量	31kDa
实测分子量	
形式	Liquid
保存条件	Store at -20°C. Avoid freeze / thaw cycles. Buffer: PBS with 0.75% BSA,50% glycerol,pH7.3.
偶联物	Unconjugated
阳性对照	MCF7,Rat lung,Rat liver,Mouse testis,Mouse spleen
细胞定位	Cell membrane, Cytoplasm, cytoskeleton, Cell projection, lamellipodium, filopodium, Secreted
纯化	

## 抗原信息

抗原信息	
------	--

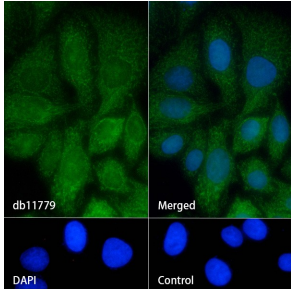
## 靶点信息

研究背景	This gene encodes the ligand of the tyrosine-kinase receptor encoded by the KIT locus. This ligand is a pleiotropic factor that acts in utero in germ cell and neural cell development, and hematopoiesis, all believed to reflect a role in cell migration. In adults, it functions pleiotropically, while mostly noted for its continued requirement in hematopoiesis. Two transcript variants encoding different isoforms have been found for this gene.
基因ID	4254
基因名	KITLG
Swiss	P21583

别名	SCF (YD31492)
----	---------------

## 产品验证

---



## 实验步骤

访问官网浏览详情: [www.ablybio.cn](http://www.ablybio.cn)