

— ABLYBIO, Help Your Research



RRM1 (YD14730) Rabbit mAb

货号: **AYD11734**

产品信息

反应	Human,Mouse,Rat
宿主	Rabbit
克隆性	Monoclonal
预测反应	
应用	WB IHC-P ICC/IF FC
推荐浓度	
理论分子量	90kDa
实测分子量	
形式	Liquid
保存条件	Store at -20°C. Avoid freeze / thaw cycles. Buffer: PBS with 0.75% BSA,50% glycerol,pH7.3.
偶联物	Unconjugated
阳性对照	HeLa,A-549,Raji,Mouse testis,Rat lung
细胞定位	Cytoplasm
纯化	亲和纯化

抗原信息

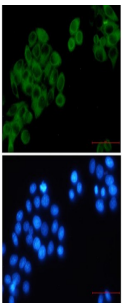
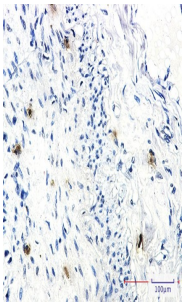
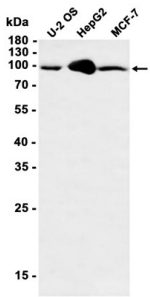
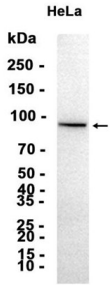
抗原信息	
------	--

靶点信息

研究背景	This gene encodes the large and catalytic subunit of ribonucleotide reductase, an enzyme essential for the conversion of ribonucleotides into deoxyribonucleotides. A pool of available deoxyribonucleotides is important for DNA replication during S phase of the cell cycle as well as multiple DNA repair processes. Alternative splicing results in multiple transcript variants.
------	--

基因ID	6240
基因名	RRM1
Swiss	P23921 (https://www.uniprot.org/uniprotkb/P23921/entry)
别名	RRM1 (YD14730),RRM1 (YD14730) Rabbit mAb,RRM1,Ribonucleoside-diphosphate reductase subunit M1, Ribonucleotide reductase large subunit,RR1

产品验证



实验步骤

访问官网浏览详情: www.ablybio.cn (<https://www.ablybio.cn/www.ablybio.cn>)

