

EPS15R (YD32132) Rabbit mAb

货号: **AYD11686**

产品信息

反应	Human,Mouse,Rat
宿主	Rabbit
克隆性	Monoclonal
预测反应	
应用	WB
推荐浓度	
理论分子量	94kDa
实测分子量	
形式	Liquid
保存条件	Store at -20°C. Avoid freeze / thaw cycles. Buffer: PBS with 0.75% BSA,50% glycerol,pH7.3.
偶联物	Unconjugated
阳性对照	MCF7,HepG2,HeLa,BxPC-3,U-251MG
细胞定位	Cell membrane, Nucleus, Membrane, coated pit
纯化	

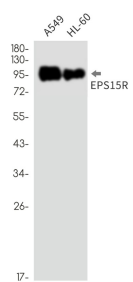
抗原信息

抗原信息	
------	--

靶点信息

研究背景	Seems to be a constitutive component of clathrin-coated pits that is required for receptor-mediated endocytosis. Involved in endocytosis of integrin beta-1 (ITGB1 and transferrin receptor (TFR; internalization of ITGB1 as DAB2-dependent cargo but not TFR seems to require association with DAB2.
基因ID	58513
基因名	EPS15L1
Swiss	Q9UBC2
别名	EPS15R (YD32132)

产品验证



实验步骤

访问官网浏览详情: www.ablybio.cn