

Pin1 (YD16846) Rabbit mAb

货号: **AYD11662**

产品信息

反应	Human,Mouse,Rat
宿主	Rabbit
克隆性	Monoclonal
预测反应	
应用	WB ICC/IF FC IP
推荐浓度	
理论分子量	18kDa
实测分子量	
形式	Liquid
保存条件	Store at -20°C. Avoid freeze / thaw cycles. Buffer: PBS with 0.75% BSA,50% glycerol,pH7.3.
偶联物	Unconjugated
阳性对照	293T,Jurkat
细胞定位	Nucleus, Nucleus speckle, Cytoplasm
纯化	

抗原信息

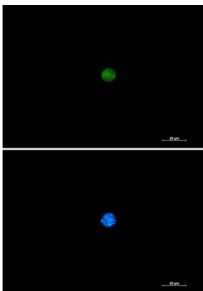
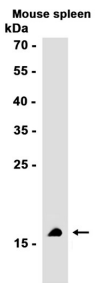
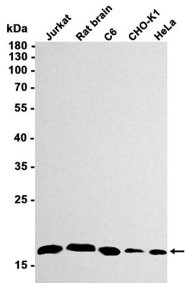
抗原信息	
------	--

靶点信息

研究背景	Peptidyl-prolyl cis/trans isomerases (PPLases) catalyze the cis/trans isomerization of peptidyl-prolyl peptide bonds. This gene encodes one of the PPLases, which specifically binds to phosphorylated ser/thr-pro motifs to catalytically regulate the post-phosphorylation conformation of its substrates. The conformational regulation catalyzed by this PPLase has a profound impact on key proteins involved in the regulation of cell growth, genotoxic and other stress responses, the immune response, induction and maintenance of pluripotency, germ cell development, neuronal differentiation, and survival. This enzyme also plays a key role in the pathogenesis of Alzheimer's disease and many cancers. Multiple alternatively spliced transcript variants have been found for this gene.
基因ID	5300

基因名	PIN1
Swiss	Q13526
别名	Pin1 (YD16846)

产品验证



实验步骤

访问官网浏览详情: www.ablybio.cn