

Cyclin B2 (YD31446) Rabbit mAb

货号: **AYD11653**

产品信息

反应	Human,Mouse,Rat
宿主	Rabbit
克隆性	Monoclonal
预测反应	
应用	WB IHC-P ICC/IF IP
推荐浓度	
理论分子量	45kDa
实测分子量	
形式	Liquid
保存条件	Store at -20°C. Avoid freeze / thaw cycles. Buffer: PBS with 0.75% BSA,50% glycerol,pH7.3.
偶联物	Unconjugated
阳性对照	HeLa,SW480,DU145,A-431,K-562,Mouse thymus
细胞定位	
纯化	

抗原信息

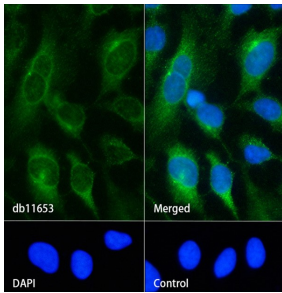
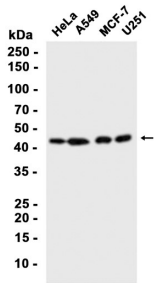
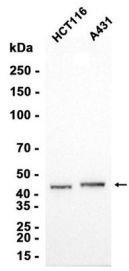
抗原信息	
------	--

靶点信息

研究背景	Cyclin B2 is a member of the cyclin family, specifically the B-type cyclins. The B-type cyclins, B1 and B2, associate with p34cdc2 and are essential components of the cell cycle regulatory machinery. B1 and B2 differ in their subcellular localization. Cyclin B1 co-localizes with microtubules, whereas cyclin B2 is primarily associated with the Golgi region. Cyclin B2 also binds to transforming growth factor beta RII and thus cyclin B2/cdc2 may play a key role in transforming growth factor beta-mediated cell cycle control.
基因ID	9133
基因名	CCNB2
Swiss	O95067

别名	Cyclin B2 (YD31446)
----	---------------------

产品验证



实验步骤

访问官网浏览详情: www.ablybio.cn