

CSDE1 (YD32401) Rabbit mAb

货号: **AYD11637**

产品信息

反应	Human,Mouse,Rat
宿主	Rabbit
克隆性	Monoclonal
预测反应	
应用	WB IHC-P ICC/IF IP
推荐浓度	
理论分子量	89kDa
实测分子量	
形式	Liquid
保存条件	Store at -20°C. Avoid freeze / thaw cycles. Buffer: PBS with 0.75% BSA,50% glycerol,pH7.3.
偶联物	Unconjugated
阳性对照	HeLa
细胞定位	Cytoplasm, Stress granule, P-body
纯化	

抗原信息

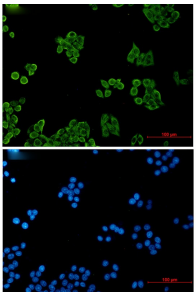
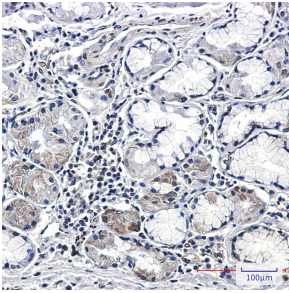
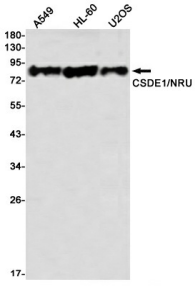
抗原信息	
------	--

靶点信息

研究背景	RNA-binding protein involved in translationally coupled mRNA turnover. Implicated with other RNA-binding proteins in the cytoplasmic deadenylation/translational and decay interplay of the FOS mRNA mediated by the major coding-region determinant of instability (mCRD domain). Required for efficient formation of stress granules.
基因ID	7812
基因名	CSDE1
Swiss	O75534

别名	CSDE1 (YD32401)
----	-----------------

产品验证



实验步骤

访问官网浏览详情: www.ablybio.cn