

— ABLYBIO, Help Your Research



MCL1 (YD13908) Rabbit mAb

货号: **AYD11616**

产品信息

反应	Human,Mouse,Rat
宿主	Rabbit
克隆性	Monoclonal
预测反应	
应用	WB IHC-P ICC/IF FC
推荐浓度	
理论分子量	37kDa
实测分子量	
形式	Liquid
保存条件	Store at -20°C. Avoid freeze / thaw cycles. Buffer: PBS with 0.75% BSA,50% glycerol,pH7.3.
偶联物	Unconjugated
阳性对照	Mouse testis
细胞定位	Membrane, Cytoplasm, Mitochondrion, Nucleus, nucleoplasm
纯化	亲和纯化

抗原信息

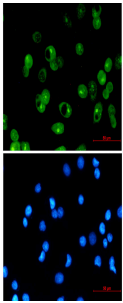
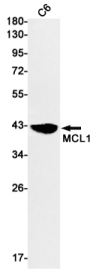
抗原信息	
------	--

靶点信息

研究背景	This gene encodes an anti-apoptotic protein, which is a member of the Bcl-2 family. Alternative splicing results in multiple transcript variants. The longest gene product (isoform 1) enhances cell survival by inhibiting apoptosis while the alternatively spliced shorter gene products (isoform 2 and isoform 3) promote apoptosis and are death-inducing.
------	---

基因ID	4170
基因名	MCL1
Swiss	Q07820 (https://www.uniprot.org/uniprotkb/Q07820/entry)
别名	MCL1 (YD13908),MCL1 (YD13908) Rabbit mAb,MCL1,Bcl-2-like protein 3,Bcl-2-related protein EAT/mcl1,mcl1/EAT,BCL2L3

产品验证



实验步骤

访问官网浏览详情: www.ablybio.cn (<https://www.ablybio.cn/www.ablybio.cn>)