

Cortactin (YD14205) Rabbit mAb

货号: **AYD11603**

产品信息

反应	Human,Mouse,Rat
宿主	Rabbit
克隆性	Monoclonal
预测反应	
应用	WB IHC-P ICC/IF FC IP
推荐浓度	
理论分子量	62kDa
实测分子量	
形式	Liquid
保存条件	Store at -20°C. Avoid freeze / thaw cycles. Buffer: PBS with 0.75% BSA,50% glycerol,pH7.3.
偶联物	Unconjugated
阳性对照	MCF7,HeLa
细胞定位	Cytoplasm, cytoskeleton, Cell projection, lamellipodium, ruffle, dendrite, Cell membrane, podosome, Cell junction, focal adhesion, Membrane, clathrin-coated pit, dendritic spine, cell cortex, Endoplasmic reticulum
纯化	

抗原信息

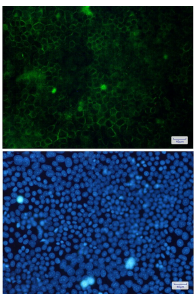
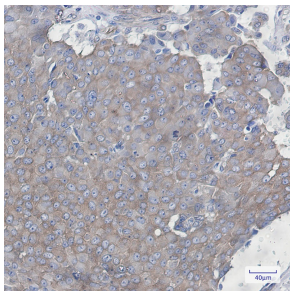
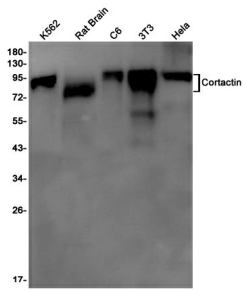
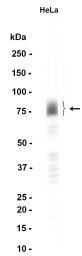
抗原信息	
------	--

靶点信息

研究背景	This gene is overexpressed in breast cancer and squamous cell carcinomas of the head and neck. The encoded protein is localized in the cytoplasm and in areas of the cell-substratum contacts. This gene has two roles: (1) regulating the interactions between components of adherens-type junctions and (2) organizing the cytoskeleton and cell adhesion structures of epithelia and carcinoma cells. During apoptosis, the encoded protein is degraded in a caspase-dependent manner. The aberrant regulation of this gene contributes to tumor cell invasion and metastasis. Three splice variants that encode different isoforms have been identified for this gene.
基因ID	2017

基因名	CTTN
Swiss	Q14247
别名	Cortactin (YD14205)

产品验证



实验步骤

访问官网浏览详情: www.ablybio.cn