

LYVE1 (YD19642) Rabbit mAb

货号: **AYD11555**

产品信息

反应	Mouse
宿主	Rabbit
克隆性	Monoclonal
预测反应	
应用	WB IHC-P FC IP
推荐浓度	
理论分子量	35kDa
实测分子量	
形式	Liquid
保存条件	Store at -20°C. Avoid freeze / thaw cycles. Buffer: PBS with 0.75% BSA,50% glycerol,pH7.3.
偶联物	Unconjugated
阳性对照	
细胞定位	Membrane
纯化	

抗原信息

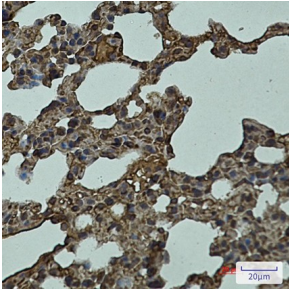
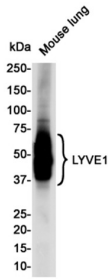
抗原信息	
------	--

靶点信息

研究背景	Ligand-specific transporter trafficking between intracellular organelles (TGN) and the plasma membrane. Plays a role in autocrine regulation of cell growth mediated by growth regulators containing cell surface retention sequence binding (CRS). May act as a hyaluronan (HA) transporter, either mediating its uptake or catabolism within lymphatic endothelial cells themselves, or its transport into the lumen of afferent lymphatic vessels for subsequent re-uptake and degradation in lymph nodes (PubMed:10187853). Binds to pericellular hyaluronan matrices deposited on the surface of leukocytes and facilitates cell adhesion and migration through lymphatic endothelium (By similarity)
基因ID	114332
基因名	Lyve1

Swiss	Q8BHC0
别名	LYVE1 (YD19642)

产品验证



实验步骤

访问官网浏览详情: www.ablybio.cn