

MAD2L2 (YD14046) Rabbit mAb

货号: **AYD11520**

产品信息

反应	Human,Mouse,Rat
宿主	Rabbit
克隆性	Monoclonal
预测反应	
应用	WB IHC-P ICC/IF FC IP
推荐浓度	
理论分子量	24kDa
实测分子量	
形式	Liquid
保存条件	Store at -20°C. Avoid freeze / thaw cycles. Buffer: PBS with 0.75% BSA,50% glycerol,pH7.3.
偶联物	Unconjugated
阳性对照	A-375,K-562,SW480,HeLa,Mouse skeletal muscle
细胞定位	Nucleus, Cytoplasm, cytoskeleton, spindle, Chromosome
纯化	

抗原信息

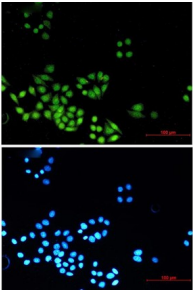
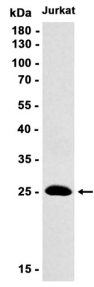
抗原信息	
------	--

靶点信息

研究背景	The protein encoded by this gene is a component of the mitotic spindle assembly checkpoint that prevents the onset of anaphase until all chromosomes are properly aligned at the metaphase plate. The encoded protein, which is similar to MAD2L1, is capable of interacting with ADAM9, ADAM15, REV1, and REV3 proteins.
基因ID	10459
基因名	MAD2L2
Swiss	Q9UI95

别名	MAD2L2 (YD14046)
----	------------------

产品验证



实验步骤

访问官网浏览详情: www.ablybio.cn