

Phospho-Filamin A/B (Ser2152/Ser2107) (YD33389) Rabbit mAb

货号: AYD11483

产品信息

反应	Human,Mouse,Rat
宿主	Rabbit
克隆性	Monoclonal
预测反应	
应用	WB IHC-P
推荐浓度	
理论分子量	278kDa
实测分子量	
形式	Liquid
保存条件	Store at -20°C. Avoid freeze / thaw cycles. Buffer: PBS with 0.75% BSA,50% glycerol,pH7.3.
偶联物	Unconjugated
阳性对照	HeLa,NIH/3T3,A-431,Mouse liver,Mouse kidney,Mouse uterus,Rat lung
细胞定位	Cytoplasm, cell cortex, cytoskeleton, stress fiber, myofibril, sarcomere, Z line
纯化	

抗原信息

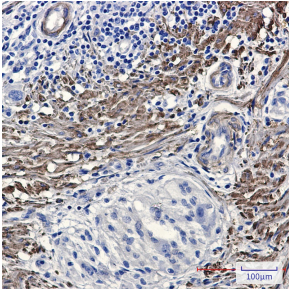
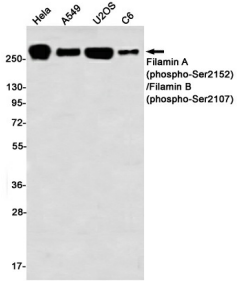
抗原信息	
------	--

靶点信息

研究背景	This gene encodes a member of the filamin family. The encoded protein interacts with glycoprotein Ib alpha as part of the process to repair vascular injuries. The platelet glycoprotein Ib complex includes glycoprotein Ib alpha, and it binds the actin cytoskeleton. Mutations in this gene have been found in several conditions: atelosteogenesis type 1 and type 3; boomerang dysplasia; autosomal dominant Larsen syndrome; and spondylocarpotarsal synostosis syndrome. Multiple alternatively spliced transcript variants that encode different protein isoforms have been described for this gene.
基因ID	2317

基因名	FLNB
Swiss	O75369
别名	Phospho-Filamin A/B (Ser2152/Ser2107) (YD33389)

产品验证



实验步骤

访问官网浏览详情: www.ablybio.cn