

# 14-3-3 alpha/beta (YD32331) Rabbit mAb

货号: **AYD11474**

## 产品信息

反应	Human, Mouse, Rat
宿主	Rabbit
克隆性	Monoclonal
预测反应	
应用	WB IHC ICC/IF
推荐浓度	
理论分子量	28kDa
实测分子量	
形式	Liquid
保存条件	Store at -20°C. Avoid freeze / thaw cycles. Buffer: PBS with 0.75% BSA,50% glycerol,pH7.3.
偶联物	Unconjugated
阳性对照	Mouse intestine,Mouse liver,Mouse kidney,HT-29,SW480,BT-474,HepG2
细胞定位	Cytoplasm, Melanosome, Vacuole membrane
纯化	

## 抗原信息

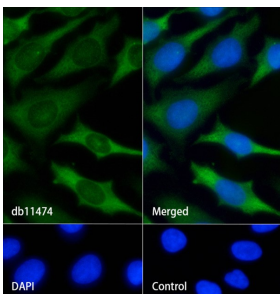
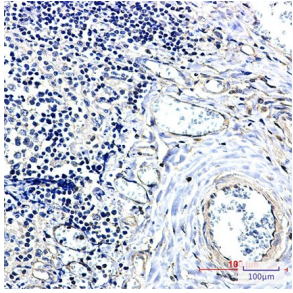
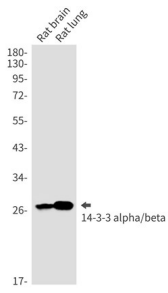
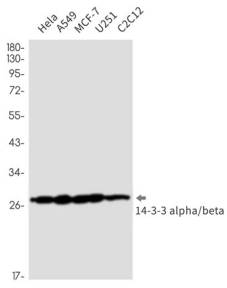
抗原信息	
------	--

## 靶点信息

研究背景	This gene encodes a protein belonging to the 14-3-3 family of proteins, members of which mediate signal transduction by binding to phosphoserine-containing proteins. This highly conserved protein family is found in both plants and mammals. The encoded protein has been shown to interact with RAF1 and CDC25 phosphatases, suggesting that it may play a role in linking mitogenic signaling and the cell cycle machinery. Two transcript variants, which encode the same protein, have been identified for this gene.
基因ID	7529
基因名	YWHAB
Swiss	P31946

别名	14-3-3 alpha/beta (YD32331)
----	-----------------------------

## 产品验证



## 实验步骤

访问官网浏览详情: [www.ablybio.cn](http://www.ablybio.cn)