

PLK1 (YD14228) Rabbit mAb

货号: **AYD11470**

产品信息

| | |
|-------|--|
| 反应 | Human |
| 宿主 | Rabbit |
| 克隆性 | Monoclonal |
| 预测反应 | |
| 应用 | WB ICC/IF FC IP |
| 推荐浓度 | |
| 理论分子量 | 68kDa |
| 实测分子量 | |
| 形式 | Liquid |
| 保存条件 | Store at -20°C. Avoid freeze / thaw cycles. Buffer: PBS with 0.75% BSA,50% glycerol,pH7.3. |
| 偶联物 | Unconjugated |
| 阳性对照 | HT-29,Mouse liver |
| 细胞定位 | Nucleus, Chromosome, centromere, kinetochore, Cytoplasm, cytoskeleton, microtubule organizing center, centrosome, spindle, Midbody |
| 纯化 | |

抗原信息

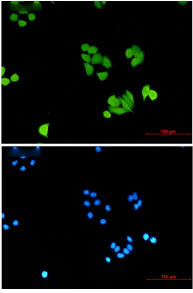
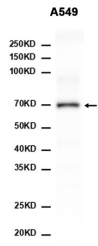
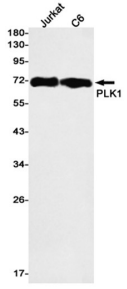
| | |
|------|--|
| 抗原信息 | |
|------|--|

靶点信息

| | |
|-------|---|
| 研究背景 | The Ser/Thr protein kinase encoded by this gene belongs to the CDC5/Polo subfamily. It is highly expressed during mitosis and elevated levels are found in many different types of cancer. Depletion of this protein in cancer cells dramatically inhibited cell proliferation and induced apoptosis; hence, it is a target for cancer therapy. |
| 基因ID | 5347 |
| 基因名 | PLK1 |
| Swiss | P53350 |

| | |
|----|----------------|
| 别名 | PLK1 (YD14228) |
|----|----------------|

产品验证



实验步骤

访问官网浏览详情: www.ablybio.cn