

gamma Tubulin (YD31533) Rabbit mAb

货号: **AYD11443**

产品信息

反应	Human,Mouse,Rat
宿主	Rabbit
克隆性	Monoclonal
预测反应	
应用	WB IHC-P ICC/IF FC IP
推荐浓度	
理论分子量	51kDa
实测分子量	
形式	Liquid
保存条件	Store at -20°C. Avoid freeze / thaw cycles. Buffer: PBS with 0.75% BSA,50% glycerol,pH7.3.
偶联物	Unconjugated
阳性对照	U2OS,HeLa,NIH/3T3,C2C12,Jurkat,C6,Mouse brain
细胞定位	Cytoplasm, cytoskeleton, microtubule organizing center, centrosome, spindle
纯化	

抗原信息

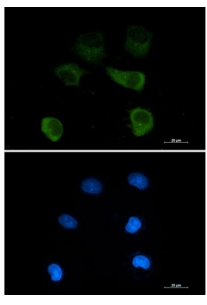
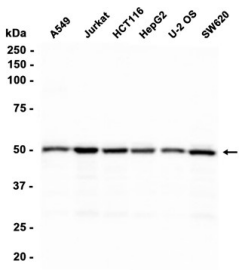
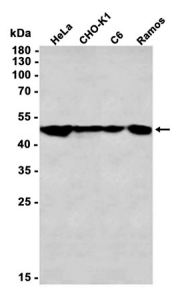
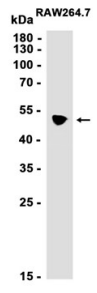
抗原信息	
------	--

靶点信息

研究背景	This gene encodes a member of the tubulin superfamily. The encoded protein localizes to the centrosome where it binds to microtubules as part of a complex referred to as the gamma-tubulin ring complex. The protein mediates microtubule nucleation and is required for microtubule formation and progression of the cell cycle. A pseudogene of this gene is found on chromosome 7.
基因ID	7283
基因名	TUBG1
Swiss	P23258

别名	gamma Tubulin (YD31533)
----	-------------------------

产品验证



实验步骤

访问官网浏览详情: www.ablybio.cn