

LYRIC (YD31341) Rabbit mAb

货号: **AYD11430**

产品信息

反应	Human,Mouse,Rat
宿主	Rabbit
克隆性	Monoclonal
预测反应	
应用	WB IHC-P ICC/IF
推荐浓度	
理论分子量	64kDa
实测分子量	
形式	Liquid
保存条件	Store at -20°C. Avoid freeze / thaw cycles. Buffer: PBS with 0.75% BSA,50% glycerol,pH7.3.
偶联物	Unconjugated
阳性对照	PC-12
细胞定位	Endoplasmic reticulum membrane, Nucleus membrane, Cell junction, tight junction, Nucleus, nucleolus, Cytoplasm, perinuclear region
纯化	

抗原信息

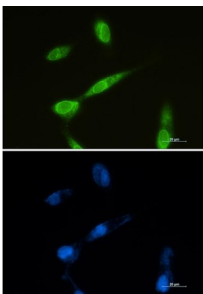
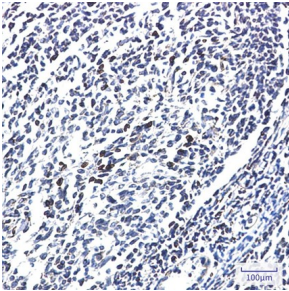
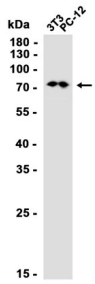
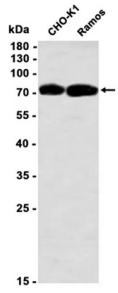
抗原信息	
------	--

靶点信息

研究背景	Downregulates SLC1A2/EAAT2 promoter activity when expressed ectopically. Activates the nuclear factor kappa-B (NF-kappa-B transcription factor). Promotes anchorage-independent growth of immortalized melanocytes and astrocytes which is a key component in tumor cell expansion. Promotes lung metastasis and also has an effect on bone and brain metastasis, possibly by enhancing the seeding of tumor cells to the target organ endothelium. Induces chemoresistance.
基因ID	92140
基因名	MTDH

Swiss	Q86UE4
别名	LYRIC (YD31341)

产品验证



实验步骤

访问官网浏览详情: www.ablybio.cn