

Creatine kinase B type (YD20638) Rabbit mAb

货号: **AYD11416**

产品信息

反应	Human,Mouse,Rat
宿主	Rabbit
克隆性	Monoclonal
预测反应	
应用	WB IHC-P ICC/IF FC
推荐浓度	
理论分子量	43kDa
实测分子量	
形式	Liquid
保存条件	Store at -20°C. Avoid freeze / thaw cycles. Buffer: PBS with 0.75% BSA,50% glycerol,pH7.3.
偶联物	Unconjugated
阳性对照	A-549,HT-29,HeLa,Mouse brain,Rat spinal cord
细胞定位	Cytoplasm, cytosol, Mitochondrion, Cell membrane
纯化	

抗原信息

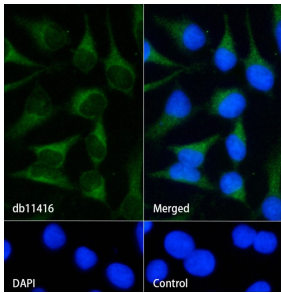
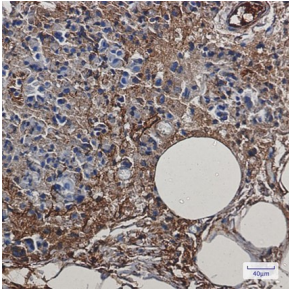
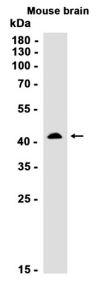
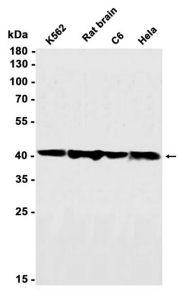
抗原信息	
------	--

靶点信息

研究背景	The protein encoded by this gene is a cytoplasmic enzyme involved in energy homeostasis. The encoded protein reversibly catalyzes the transfer of phosphate between ATP and various phosphogens such as creatine phosphate. It acts as a homodimer in brain as well as in other tissues, and as a heterodimer with a similar muscle isozyme in heart. The encoded protein is a member of the ATP:guanido phosphotransferase protein family. A pseudogene of this gene has been characterized.
基因ID	1152
基因名	CKB
Swiss	P12277

别名	Creatine kinase B type (YD20638)
----	----------------------------------

产品验证



实验步骤

访问官网浏览详情: www.ablybio.cn