

PSME1 (YD34692) Rabbit mAb

货号: **AYD11408**

产品信息

反应	Human,Mouse,Rat
宿主	Rabbit
克隆性	Monoclonal
预测反应	
应用	WB ICC/IF
推荐浓度	
理论分子量	29kDa/29kDa/29kDa
实测分子量	
形式	Liquid
保存条件	Store at -20°C. Avoid freeze / thaw cycles. Buffer: PBS with 0.75% BSA,50% glycerol,pH7.3.
偶联物	Unconjugated
阳性对照	
细胞定位	
纯化	

抗原信息

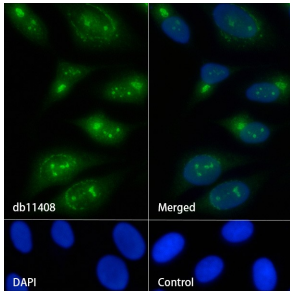
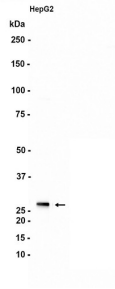
抗原信息	
------	--

靶点信息

研究背景	Implicated in immunoproteasome assembly and required for efficient antigen processing. The PA28 activator complex enhances the generation of class I binding peptides by altering the cleavage pattern of the proteasome Implicated in immunoproteasome assembly and required for efficient antigen processing. The e PA28 activator complex enhances the generation of class I binding peptides by altering the cleavage pattern of the proteasome Implicated in immunoproteasome assembly and required for efficient antigen processing. The PA28 activator complex enhances the generation of class I binding peptides by altering the cleavage pattern of the proteasome
基因ID	5720
基因名	PSME1, Psme1

Swiss	Q06323, P97371, Q63797
别名	PSME1 (YD34692)

产品验证



实验步骤

访问官网浏览详情: www.ablybio.cn