

IDE (YD34096) Rabbit mAb

货号: **AYD11407**

产品信息

反应	Human, Mouse, Rat
宿主	Rabbit
克隆性	Monoclonal
预测反应	
应用	WB ICC/IF FC
推荐浓度	
理论分子量	118kDa
实测分子量	
形式	Liquid
保存条件	Store at -20°C. Avoid freeze / thaw cycles. Buffer: PBS with 0.75% BSA,50% glycerol,pH7.3.
偶联物	Unconjugated
阳性对照	DU145,Mouse liver
细胞定位	Cytoplasm, cytosol, Cell membrane, Secreted
纯化	

抗原信息

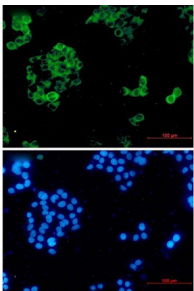
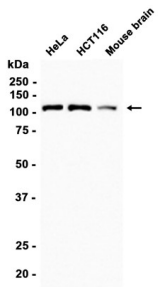
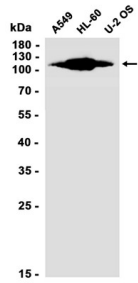
抗原信息	
------	--

靶点信息

研究背景	<p>This gene encodes a zinc metallopeptidase that degrades intracellular insulin, and thereby terminates insulin activity, as well as participating in intercellular peptide signalling by degrading diverse peptides such as glucagon, amylin, bradykinin, and kallidin. The preferential affinity of this enzyme for insulin results in insulin-mediated inhibition of the degradation of other peptides such as beta-amyloid. Deficiencies in this protein's function are associated with Alzheimer's disease and type 2 diabetes mellitus but mutations in this gene have not been shown to be causative for these diseases. This protein localizes primarily to the cytoplasm but in some cell types localizes to the extracellular space, cell membrane, peroxisome, and mitochondrion. Alternative splicing results in multiple transcript variants encoding distinct isoforms. Additional transcript variants have been described but have not been experimentally verified.</p>
基因ID	3416

基因名	IDE
Swiss	P14735
别名	IDE (YD34096)

产品验证



实验步骤

访问官网浏览详情: www.ablybio.cn