

# PIGU (YD35330) Rabbit mAb

货号: **AYD11399**

## 产品信息

反应	Human,Mouse,Rat
宿主	Rabbit
克隆性	Monoclonal
预测反应	
应用	WB IHC-P
推荐浓度	
理论分子量	50kDa/50kDa/50kDa
实测分子量	
形式	Liquid
保存条件	Store at -20°C. Avoid freeze / thaw cycles. Buffer: PBS with 0.75% BSA,50% glycerol,pH7.3.
偶联物	Unconjugated
阳性对照	
细胞定位	Endoplasmic reticulum membrane
纯化	

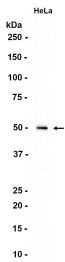
## 抗原信息

抗原信息	
------	--

## 靶点信息

研究背景	Component of the glycosylphosphatidylinositol-anchor (GPI-anchor) transamidase (GPI-T) complex that catalyzes the formation of the linkage between a proprotein and a GPI-anchor and participates in GPI anchored protein biosynthesis (PubMed:12802054, PubMed:31353022, PubMed:34576938, PubMed:35165458, PubMed:35551457, PubMed:37684232). Binds the lipid portion of GPI-anchor (PubMed:37684232). May act as an organizer in the transmembrane layer to recruit other subunits, and thus is essential for assembly of the complex (PubMed:35165458, PubMed:35551457) Component of the glycosylphosphatidylinositol-anchor (GPI-anchor) transamidase (GPI-T) complex that catalyzes the formation of the linkage between a proprotein and a GPI-anchor and participates in GPI anchored protein biosynthesis. Binds the lipid portion of GPI-anchor. May act as an organizer in the transmembrane layer to recruit other subunits, and thus is essential for assembly of the complex Component of the glycosylphosphatidylinositol-anchor (GPI-anchor) transamidase (GPI-T) complex that catalyzes the formation of the linkage between a proprotein and a GPI-anchor and participates in GPI anchored protein biosynthesis (PubMed:12802054). Binds the lipid portion of GPI-anchor. May act as an organizer in the transmembrane layer to recruit other subunits, and thus is essential for assembly of the complex (By similarity)
基因ID	128869
基因名	PIGU, Pigu
Swiss	Q9H490, Q8K358, Q8CHJ1
别名	PIGU (YD35330)

## 产品验证



## 实验步骤

访问官网浏览详情: [www.ablybio.cn](http://www.ablybio.cn)