

GABARAPL2 (YD20959) Rabbit mAb

货号: **AYD11278**

产品信息

反应	Human,Mouse,Rat
宿主	Rabbit
克隆性	Monoclonal
预测反应	
应用	WB
推荐浓度	
理论分子量	14kDa
实测分子量	
形式	Liquid
保存条件	Store at -20°C. Avoid freeze / thaw cycles. Buffer: PBS with 0.75% BSA,50% glycerol,pH7.3.
偶联物	Unconjugated
阳性对照	Mouse brain
细胞定位	Cytoplasmic vesicle, autophagosome, Endoplasmic reticulum membrane, Golgi apparatus
纯化	

抗原信息

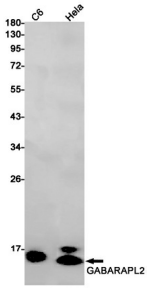
抗原信息	
------	--

靶点信息

研究背景	Ubiquitin-like modifier involved in intra-Golgi traffic (By similarity. Modulates intra-Golgi transport through coupling between NSF activity and SNAREs activation (By similarity. It first stimulates the ATPase activity of NSF which in turn stimulates the association with GOSR1 (By similarity. Involved in autophagy. Plays a role in mitophagy which contributes to regulate mitochondrial quantity and quality by eliminating the mitochondria to a basal level to fulfill cellular energy requirements and preventing excess ROS production. Whereas LC3s are involved in elongation of the phagophore membrane, the GABARAP/GATE-16 subfamily is essential for a later stage in autophagosome maturation.
基因ID	11345
基因名	GABARAPL2

Swiss	P60520
别名	GABARAPL2 (YD20959)

产品验证



实验步骤

访问官网浏览详情: www.ablybio.cn