

PKC eta (YD19544) Rabbit mAb

货号: **AYD11234**

产品信息

反应	Human,Mouse,Rat
宿主	Rabbit
克隆性	Monoclonal
预测反应	
应用	WB IP
推荐浓度	WB: 1:500 - 1:2000 IHC-P: 1:100 - 1:200 IP: 1:20 - 1:50
理论分子量	78kDa
实测分子量	
形式	Liquid
保存条件	Store at -20°C. Avoid freeze / thaw cycles. Buffer: PBS with 0.75% BSA,50% glycerol,pH7.3.
偶联物	Unconjugated
阳性对照	C6
细胞定位	Cytoplasm
纯化	

抗原信息

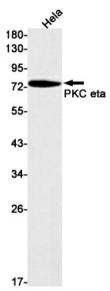
抗原信息	
------	--

靶点信息

研究背景	<p>Protein kinase C (PKC) is a family of serine- and threonine-specific protein kinases that can be activated by calcium and the second messenger diacylglycerol. PKC family members phosphorylate a wide variety of protein targets and are known to be involved in diverse cellular signaling pathways. PKC family members also serve as major receptors for phorbol esters, a class of tumor promoters. Each member of the PKC family has a specific expression profile and is believed to play a distinct role in cells. The protein encoded by this gene is one of the PKC family members. This kinase has been reported to play roles in many different cellular processes, such as cell adhesion, cell transformation, cell cycle checkpoint, and cell volume control. Knockout studies in mice suggest that this kinase may be a fundamental regulator of cardiac contractility and Ca(2+) handling in myocytes. [provided by RefSeq, Jul 2008]</p>
------	---

基因ID	5583
基因名	PRKCH
Swiss	P24723
别名	PKC eta (YD19544)

产品验证



实验步骤

访问官网浏览详情: www.ablybio.cn