

MLH1 (YD11983) Rabbit mAb

货号: **AYD11226**

产品信息

反应	Human, Mouse, Rat
宿主	Rabbit
克隆性	Monoclonal
预测反应	
应用	WB IHC ICC/IF FC IP
推荐浓度	
理论分子量	85kDa
实测分子量	
形式	Liquid
保存条件	Store at -20°C. Avoid freeze / thaw cycles. Buffer: PBS with 0.75% BSA,50% glycerol,pH7.3.
偶联物	Unconjugated
阳性对照	Jurkat,Mouse thymus,HeLa,mouse brain
细胞定位	Nucleus, Chromosome
纯化	

抗原信息

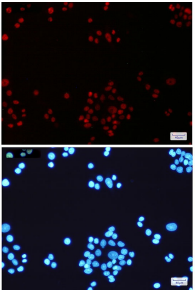
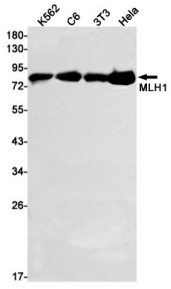
抗原信息	
------	--

靶点信息

研究背景	This gene was identified as a locus frequently mutated in hereditary nonpolyposis colon cancer (HNPCC). It is a human homolog of the E. coli DNA mismatch repair gene mutL, consistent with the characteristic alterations in microsatellite sequences (RER+phenotype) found in HNPCC. Alternative splicing results in multiple transcript variants encoding distinct isoforms. Additional transcript variants have been described, but their full-length natures have not been determined.[provided by RefSeq, Nov 2009]
基因ID	4292
基因名	MLH1
Swiss	P40692

别名	MLH1 (YD11983)
----	----------------

产品验证



实验步骤

访问官网浏览详情: www.ablybio.cn