

Acetyl-alpha Tubulin (Lys40) (YD12213) Rabbit mAb

货号: **AYD11202**

产品信息

反应	Human,Mouse,Rat
宿主	Rabbit
克隆性	Monoclonal
预测反应	
应用	WB IHC-P ICC/IF FC IP
推荐浓度	
理论分子量	50kDa/50kDa/50kDa
实测分子量	
形式	Liquid
保存条件	Store at -20°C. Avoid freeze / thaw cycles. Buffer: PBS with 0.75% BSA,50% glycerol,pH7.3.
偶联物	Unconjugated
阳性对照	
细胞定位	Cytoplasm, cytoskeleton
纯化	

抗原信息

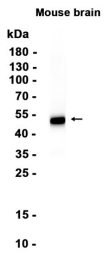
抗原信息	
------	--

靶点信息

研究背景	<p>Tubulin is the major constituent of microtubules, a cylinder consisting of laterally associated linear protofilaments composed of alpha- and beta-tubulin heterodimers. Microtubules grow by the addition of GTP-tubulin dimers to the microtubule end, where a stabilizing cap forms. Below the cap, tubulin dimers are in GDP-bound state, owing to GTPase activity of alpha-tubulin. Tubulin is the major constituent of microtubules, a cylinder consisting of laterally associated linear protofilaments composed of alpha- and beta-tubulin heterodimers. Microtubules grow by the addition of GTP-tubulin dimers to the microtubule end, where a stabilizing cap forms. Below the cap, tubulin dimers are in GDP-bound state, owing to GTPase activity of alpha-tubulin.</p>
------	--

基因ID	7277
基因名	TUBA4A, Tuba4a
Swiss	P68366, P68368, Q5XIF6
别名	Acetyl-alpha Tubulin (Lys40) (YD12213)

产品验证



实验步骤

访问官网浏览详情: www.ablybio.cn