

CD166 (YD13056) Rabbit mAb

货号: **AYD11186**

产品信息

反应	Human,Mouse,Rat
宿主	Rabbit
克隆性	Monoclonal
预测反应	
应用	WB IHC-P ICC/IF FC IP
推荐浓度	
理论分子量	65kDa
实测分子量	
形式	Liquid
保存条件	Store at -20°C. Avoid freeze / thaw cycles. Buffer: PBS with 0.75% BSA,50% glycerol,pH7.3.
偶联物	Unconjugated
阳性对照	HepG2,A375,U-87MG,A-549,BT-474,Mouse liver
细胞定位	Cell membrane, Cell projection, axon, dendrite, Secreted
纯化	

抗原信息

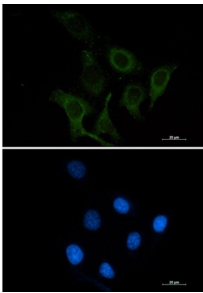
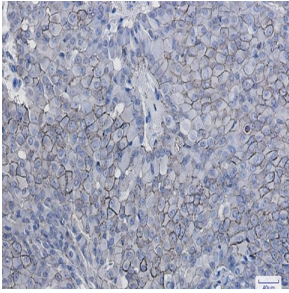
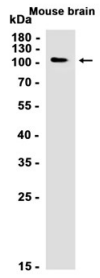
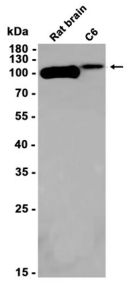
抗原信息	
------	--

靶点信息

研究背景	This gene encodes activated leukocyte cell adhesion molecule (ALCAM), also known as CD166 (cluster of differentiation 166), which is a member of a subfamily of immunoglobulin receptors with five immunoglobulin-like domains (VVC2C2C2) in the extracellular domain. This protein binds to T-cell differentiation antigen CD6, and is implicated in the processes of cell adhesion and migration. Multiple alternatively spliced transcript variants encoding different isoforms have been found.
基因ID	214
基因名	ALCAM
Swiss	Q13740

别名	CD166 (YD13056)
----	-----------------

产品验证



实验步骤

访问官网浏览详情: www.ablybio.cn