

Vinculin (YD14193) Rabbit mAb

货号: **AYD11158**

产品信息

反应	Human,Mouse,Rat
宿主	Rabbit
克隆性	Monoclonal
预测反应	
应用	WB IHC-P
推荐浓度	
理论分子量	124kDa
实测分子量	
形式	Liquid
保存条件	Store at -20°C. Avoid freeze / thaw cycles. Buffer: PBS with 0.75% BSA,50% glycerol,pH7.3.
偶联物	Unconjugated
阳性对照	HeLa,PC-12,RD,Mouse lung,Rat lung,Rat heart
细胞定位	Cell membrane, Cell junction, adherens junction, focal adhesion, Cytoplasm, cytoskeleton, sarcolemma, Cell projection, podosome, perinuclear region
纯化	

抗原信息

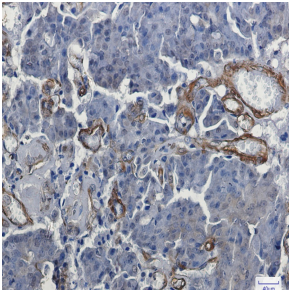
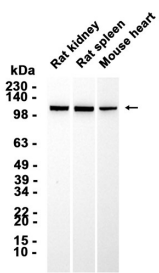
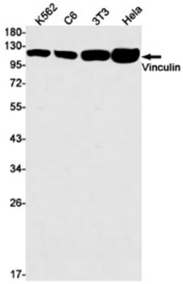
抗原信息	
------	--

靶点信息

研究背景	Vinculin is a cytoskeletal protein associated with cell-cell and cell-matrix junctions, where it is thought to function as one of several interacting proteins involved in anchoring F-actin to the membrane. Defects in VCL are the cause of cardiomyopathy dilated type 1W. Dilated cardiomyopathy is a disorder characterized by ventricular dilation and impaired systolic function, resulting in congestive heart failure and arrhythmia. Multiple alternatively spliced transcript variants have been found for this gene, but the biological validity of some variants has not been determined.
基因ID	7414
基因名	VCL

Swiss	P18206
别名	Vinculin (YD14193)

产品验证



实验步骤

访问官网浏览详情: www.ablybio.cn