

Doublecortin (YD11323) Rabbit mAb

货号: **AYD11118**

产品信息

反应	Human,Mouse,Rat
宿主	Rabbit
克隆性	Monoclonal
预测反应	
应用	WB IHC-P ICC/IF
推荐浓度	
理论分子量	41kDa
实测分子量	
形式	Liquid
保存条件	Store at -20°C. Avoid freeze / thaw cycles. Buffer: PBS with 0.75% BSA,50% glycerol,pH7.3.
偶联物	Unconjugated
阳性对照	SH-SY5Y,Mouse spinal cord
细胞定位	Cytoplasm, Cell projection, neuron projection
纯化	

抗原信息

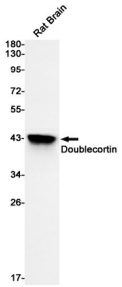
抗原信息	
------	--

靶点信息

研究背景	<p>This gene encodes a member of the doublecortin family. The protein encoded by this gene is a cytoplasmic protein and contains two doublecortin domains, which bind microtubules. In the developing cortex, cortical neurons must migrate over long distances to reach the site of their final differentiation. The encoded protein appears to direct neuronal migration by regulating the organization and stability of microtubules. In addition, the encoded protein interacts with LIS1, the regulatory gamma subunit of platelet activating factor acetylhydrolase, and this interaction is important to proper microtubule function in the developing cortex. Mutations in this gene cause abnormal migration of neurons during development and disrupt the layering of the cortex, leading to epilepsy, mental retardation, subcortical band heterotopia ('double cortex' syndrome) in females and lissencephaly ('smooth brain' syndrome) in males. Multiple transcript variants encoding different isoforms have been found for this gene.</p>
基因ID	1641

基因名	DCX
Swiss	O43602
别名	Doublecortin (YD11323)

产品验证



实验步骤

访问官网浏览详情: www.ablybio.cn