

— ABLYBIO, Help Your Research



GC1q R (YD12614) Rabbit mAb

货号: **AYD11102**

产品信息

反应	Human,Mouse,Rat
宿主	Rabbit
克隆性	Monoclonal
预测反应	
应用	WB IHC-P
推荐浓度	
理论分子量	31kDa
实测分子量	
形式	Liquid
保存条件	Store at -20°C. Avoid freeze / thaw cycles. Buffer: PBS with 0.75% BSA,50% glycerol,pH7.3.
偶联物	Unconjugated
阳性对照	CEM,SW620,HeLa,Jurkat,Mouse liver,Mouse kidney,Mouse heart,Mouse intestine,Rat brain
细胞定位	Mitochondrion matrix, Nucleus, nucleolus, Cell membrane, Secreted, Cytoplasm
纯化	亲和纯化

抗原信息

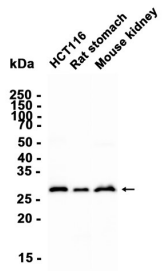
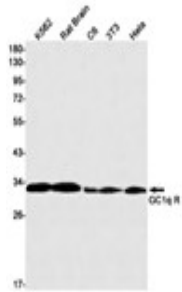
抗原信息	
------	--

靶点信息

研究背景	The human complement subcomponent C1q associates with C1r and C1s in order to yield the first component of the serum complement system. The protein encoded by this gene is known to bind to the globular heads of C1q molecules and inhibit C1 activation. This protein has also been identified as the p32 subunit of pre-mRNA splicing factor SF2, as well as a hyaluronic acid-binding protein.
------	---

基因ID	708
基因名	C1QBP
Swiss	Q07021 (https://www.uniprot.org/uniprotkb/Q07021/entry)
别名	GC1q R (YD12614),GC1q R (YD12614) Rabbit mAb,C1QBP,ASF/SF2-associated protein p32,Glycoprotein g C1qBP,Hyaluronan-binding protein 1,Mitochondrial matrix protein p32,gC1q-R protein,p33,GC1QBP,HABP 1,SF2P32

产品验证



实验步骤

访问官网浏览详情: www.ablybio.cn (<https://www.ablybio.cn/www.ablybio.cn>)