

# SEH1L (YD20932) Rabbit mAb

货号: **AYD11100**

## 产品信息

反应	Human,Mouse
宿主	Rabbit
克隆性	Monoclonal
预测反应	
应用	WB IP
推荐浓度	
理论分子量	40kDa
实测分子量	
形式	Liquid
保存条件	Store at -20°C. Avoid freeze / thaw cycles. Buffer: PBS with 0.75% BSA,50% glycerol,pH7.3.
偶联物	Unconjugated
阳性对照	
细胞定位	Chromosome, centromere, kinetochore, Nucleus, nuclear pore complex, Lysosome membrane
纯化	

## 抗原信息

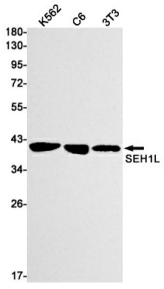
抗原信息	
------	--

## 靶点信息

研究背景	Component of the Nup107-160 subcomplex of the nuclear pore complex (NPC). The Nup107-160 subcomplex is required for the assembly of a functional NPC. The Nup107-160 subcomplex is also required for normal kinetochore microtubule attachment, mitotic progression and chromosome segregation. This subunit plays a role in recruitment of the Nup107-160 subcomplex to the kinetochore
基因ID	3134
基因名	Seh1l
Swiss	Q8R2U0

别名	SEH1L (YD20932)
----	-----------------

## 产品验证



## 实验步骤

访问官网浏览详情: [www.ablybio.cn](http://www.ablybio.cn)