

POLG (YD34105) Rabbit mAb

货号: **AYD11098**

产品信息

| | |
|-------|---|
| 反应 | Human |
| 宿主 | Rabbit |
| 克隆性 | Monoclonal |
| 预测反应 | |
| 应用 | WB |
| 推荐浓度 | |
| 理论分子量 | 140kDa |
| 实测分子量 | |
| 形式 | Liquid |
| 保存条件 | Store at -20°C. Avoid freeze / thaw cycles. Buffer: PBS with 0.75% BSA,50% glycerol,pH7.3. |
| 偶联物 | Unconjugated |
| 阳性对照 | 293F,Jurkat,Mouse placenta,Rat testis |
| 细胞定位 | Mitochondrion, Mitochondrion matrix, mitochondrion nucleoid |
| 纯化 | |

抗原信息

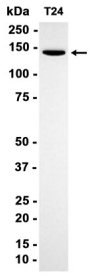
| | |
|------|--|
| 抗原信息 | |
|------|--|

靶点信息

| | |
|------|--|
| 研究背景 | Mitochondrial DNA polymerase is heterotrimeric, consisting of a homodimer of accessory subunits plus a catalytic subunit. The protein encoded by this gene is the catalytic subunit of mitochondrial DNA polymerase. The encoded protein contains a polyglutamine tract near its N-terminus that may be polymorphic. Defects in this gene are a cause of progressive external ophthalmoplegia with mitochondrial DNA deletions 1 (PEOA1), sensory ataxic neuropathy dysarthria and ophthalmoparesis (SANDO), Alpers-Huttenlocher syndrome (AHS), and mitochondrial neurogastrointestinal encephalopathy syndrome (MNGIE). Two transcript variants encoding the same protein have been found for this gene. |
| 基因ID | 5428 |
| 基因名 | POLG |

| | |
|-------|----------------|
| Swiss | P54098 |
| 别名 | POLG (YD34105) |

产品验证



实验步骤

访问官网浏览详情: www.ablybio.cn