

# CPSF6 (YD15609) Rabbit mAb

货号: **AYD11093**

## 产品信息

反应	Human,Mouse,Rat
宿主	Rabbit
克隆性	Monoclonal
预测反应	
应用	WB IHC-P ICC/IF FC IP
推荐浓度	
理论分子量	59kDa
实测分子量	
形式	Liquid
保存条件	Store at -20°C. Avoid freeze / thaw cycles. Buffer: PBS with 0.75% BSA,50% glycerol,pH7.3.
偶联物	Unconjugated
阳性对照	HeLa,293T,Jurkat,HepG2,HT-1080,Mouse brain,Mouse liver,Rat brain
细胞定位	Nucleus, nucleoplasm, Nucleus speckle, Cytoplasm
纯化	

## 抗原信息

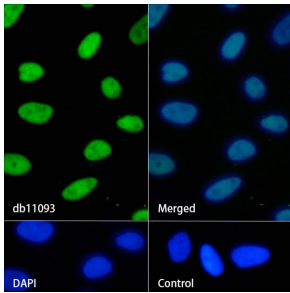
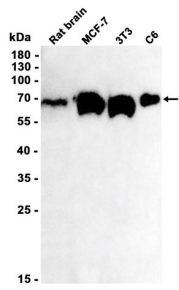
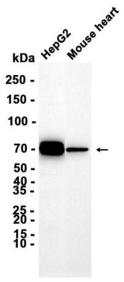
抗原信息	
------	--

## 靶点信息

研究背景	The protein encoded by this gene is one subunit of a cleavage factor required for 3' RNA cleavage and polyadenylation processing. The interaction of the protein with the RNA is one of the earliest steps in the assembly of the 3' end processing complex and facilitates the recruitment of other processing factors. The cleavage factor complex is composed of four polypeptides. This gene encodes the 68kD subunit. It has a domain organization reminiscent of spliceosomal proteins.
基因ID	11052
基因名	CPSF6
Swiss	Q16630

别名	CPSF6 (YD15609)
----	-----------------

### 产品验证



### 实验步骤

访问官网浏览详情: [www.ablybio.cn](http://www.ablybio.cn)