

Sodium Potassium ATPase (YD11403) Rabbit mAb

货号: **AYD11038**

产品信息

反应	Human,Mouse,Rat
宿主	Rabbit
克隆性	Monoclonal
预测反应	
应用	WB IHC-P ICC/IF FC
推荐浓度	
理论分子量	113kDa
实测分子量	
形式	Liquid
保存条件	Store at -20°C. Avoid freeze / thaw cycles. Buffer: PBS with 0.75% BSA,50% glycerol,pH7.3.
偶联物	Unconjugated
阳性对照	THP-1,Mouse liver
细胞定位	Cell membrane, Basolateral cell membrane, sarcolemma, Cell projection, axon, Melanosome
纯化	

抗原信息

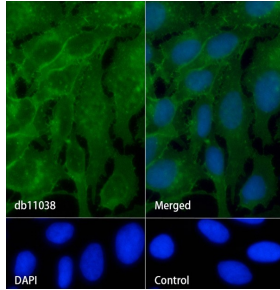
抗原信息	
------	--

靶点信息

研究背景	<p>The protein encoded by this gene belongs to the family of P-type cation transport ATPases, and to the sub family of Na⁺/K⁺ -ATPases. Na⁺/K⁺ -ATPase is an integral membrane protein responsible for establishing and maintaining the electrochemical gradients of Na and K ions across the plasma membrane. These gradients are essential for osmoregulation, for sodium-coupled transport of a variety of organic and inorganic molecules, and for electrical excitability of nerve and muscle. This enzyme is composed of two subunits, a large catalytic subunit (alpha) and a smaller glycoprotein subunit (beta). The catalytic subunit of Na⁺/K⁺ -ATPase is encoded by multiple genes. This gene encodes an alpha 1 subunit. Multiple transcript variants encoding different isoforms have been found for this gene.</p>
基因ID	476

基因名	ATP1A1
Swiss	P05023
别名	Sodium Potassium ATPase (YD11403)

产品验证



实验步骤

访问官网浏览详情: www.ablybio.cn