

SLC25A12 (YD14325) Rabbit mAb

货号: **AYD11032**

产品信息

反应	Human,Mouse,Rat
宿主	Rabbit
克隆性	Monoclonal
预测反应	
应用	WB IP
推荐浓度	
理论分子量	75kDa
实测分子量	
形式	Liquid
保存条件	Store at -20°C. Avoid freeze / thaw cycles. Buffer: PBS with 0.75% BSA,50% glycerol,pH7.3.
偶联物	Unconjugated
阳性对照	Raji,U-87MG,B cells,SKOV3,HeLa,Mouse heart,Mouse brain,Mouse liver,Rat heart
细胞定位	Mitochondrion inner membrane
纯化	

抗原信息

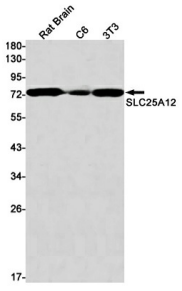
抗原信息	
------	--

靶点信息

研究背景	This gene encodes a calcium-binding mitochondrial carrier protein. The encoded protein localizes to the mitochondria and is involved in the exchange of aspartate for glutamate across the inner mitochondrial membrane. Polymorphisms in this gene may be associated with autism, and mutations in this gene may also be a cause of global cerebral hypomyelination. Alternatively spliced transcript variants have been observed for this gene.
基因ID	8604
基因名	SLC25A12
Swiss	O75746

别名	SLC25A12 (YD14325)
----	--------------------

产品验证



实验步骤

访问官网浏览详情: www.ablybio.cn