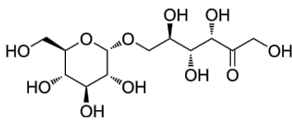


Palatinose

货号: **AYB27880**



产品信息

生物活性	Palatinose (Isomaltulose) is a disaccharide made up of glucose and fructose. Palatinose can be isolated from honey and sugar cane, with only half as sweet as sucrose. Palatinose instead of sucrose is beneficial to reduce the development of caries in animals .
CAS	13718-94-0
中文名称	PALATINOSEHYDRATE异麦芽酮糖
分子量	342.30
体外研究	Palatinose 能够特异性被变形链球菌的 a、d、g 型血清菌株利用发酵，但不会被 b、c、e 或 f 的菌株发酵。 The accuracy of these methods have not been independently confirmed. They are for reference only.
体内研究	
形式	
运输条件	Room temperature in continental US; may vary elsewhere.
保存条件	Please store the product under the recommended conditions in the Certificate of Analysis.
溶解性	
纯度	