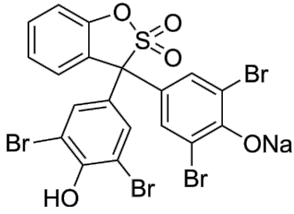


Bromophenol blue sodium

货号: **AYB26916**

产品信息

生物活性	Bromophenol blue sodium is a pH indicator. It changes from yellow at pH 3.0 to blue at pH 4.6. Bromophenol blue sodium is also used as a tracking dye to monitor the process of agarose gel electrophoresis and polyacrylamide gel electrophoresis.
CAS	62625-28-9
中文名称	
分子量	691.94
体外研究	
体内研究	
形式	Solid
运输条件	Room temperature in continental US; may vary elsewhere.
保存条件	
溶解性	
纯度	