

— ABLYBIO, Help Your Research



Rubicon Rabbit mAb

货号: **ATY1015**

产品信息

反应	Human,Mouse,Rat
宿主	Rabbit
克隆性	Monoclonal
预测反应	
应用	WB ICC/IF ELISA
推荐浓度	WB : 1:1000-1:5000; IF : IF 1:100-1:800; ELISA : ELISA 1:5000-1:20000
理论分子量	109kD(Calculated).
实测分子量	109-125kDa
形式	Liquid
保存条件	Store at -20°C. Avoid freeze / thaw cycles. Buffer: PBS with 0.75% BSA,50% glycerol,pH7.3.
偶联物	Unconjugated
阳性对照	
细胞定位	Late endosome. Lysosome. Early endosome.
纯化	Affinity purification

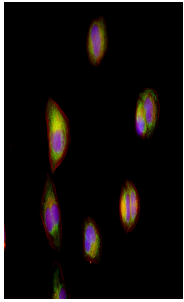
抗原信息

抗原信息	
------	--

靶点信息

研究背景	Rubicon plays a role as part of the Beclin1-PI3K complex inhibiting autophagic activity. This protein modulates the fusion of autophagosomes with lysosomes a critical step in degrading cellular components. By preventing excessive autophagy Rubicon helps maintain cellular equilibrium balancing degradation and synthesis processes. Its involvement in endo-lysosomal trafficking is essential for the management of cellular waste and nutrient recycling.
基因ID	9711
基因名	KIAA0226
Swiss	Q92622 (https://www.uniprot.org/uniprotkb/Q92622/entry)
别名	Baron; Beclin 1 associated RUN domain containing protein; Beclin-1 associated RUN domain containing protein; hypothetical protein LOC9711; Kiaa0226; OTTHUMP00000208021; OTTHUMP00000208023; OTTHUMP00000208024; RUBIC_HUMAN

产品验证



The samples were fixed with PFA and permeabilized in 0.1% Triton X-100, then blocked in 10% serum for 45 minutes at 25°C. Samples were then incubated with primary Ab Rubicon and Rabbit actin for 1 hour at 37°C. An AlexaFluor594 conjugated goat anti-rabbit IgG(H+L) Ab(Red) and an AlexaFluor488 conjugated goat anti-rabbit IgG(H+L) Ab(Green). The nuclear counter stain is DAPI.

实验步骤

访问官网浏览详情: www.ablybio.cn (<https://www.ablybio.cn/www.ablybio.cn>)